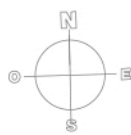
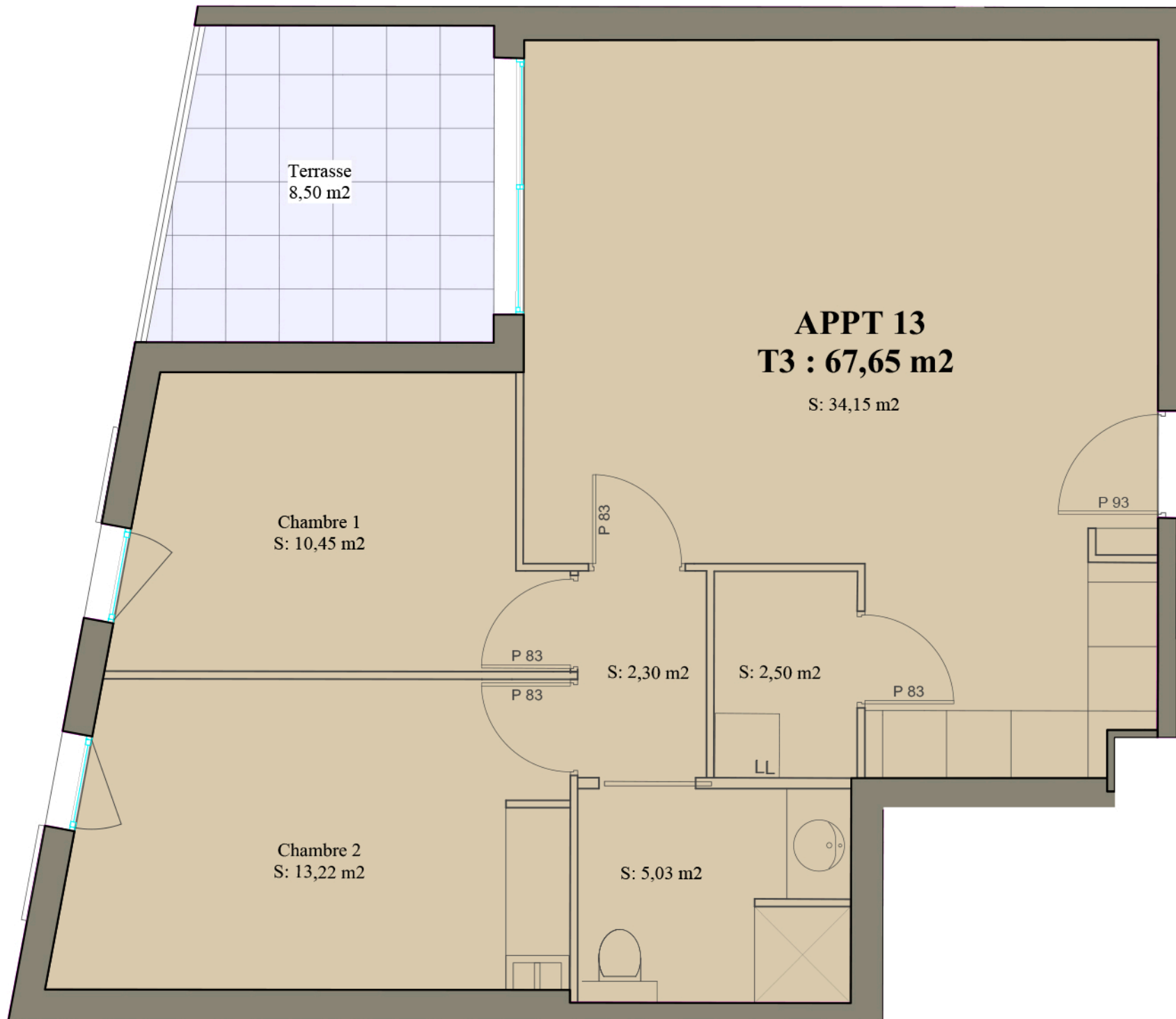


R+2 - PLAN - LOGEMENT N° 13



SARL LE LYNX - 14 VIA NOVA - 03610 FRÉJUS



ECH : 1/50

R+2



Logement n° 13 - T3	
SURFACES	
Séjour/repas	34,15 m ²
Cellier	2,50 m ²
Salle de bain	5,03 m ²
Hall	2,30 m ²
Chambre 1	10,45 m ²
Chambre 2	13,22 m ²
Total surface habitable	67,65 m²
terrasse	8,50 m ²

